

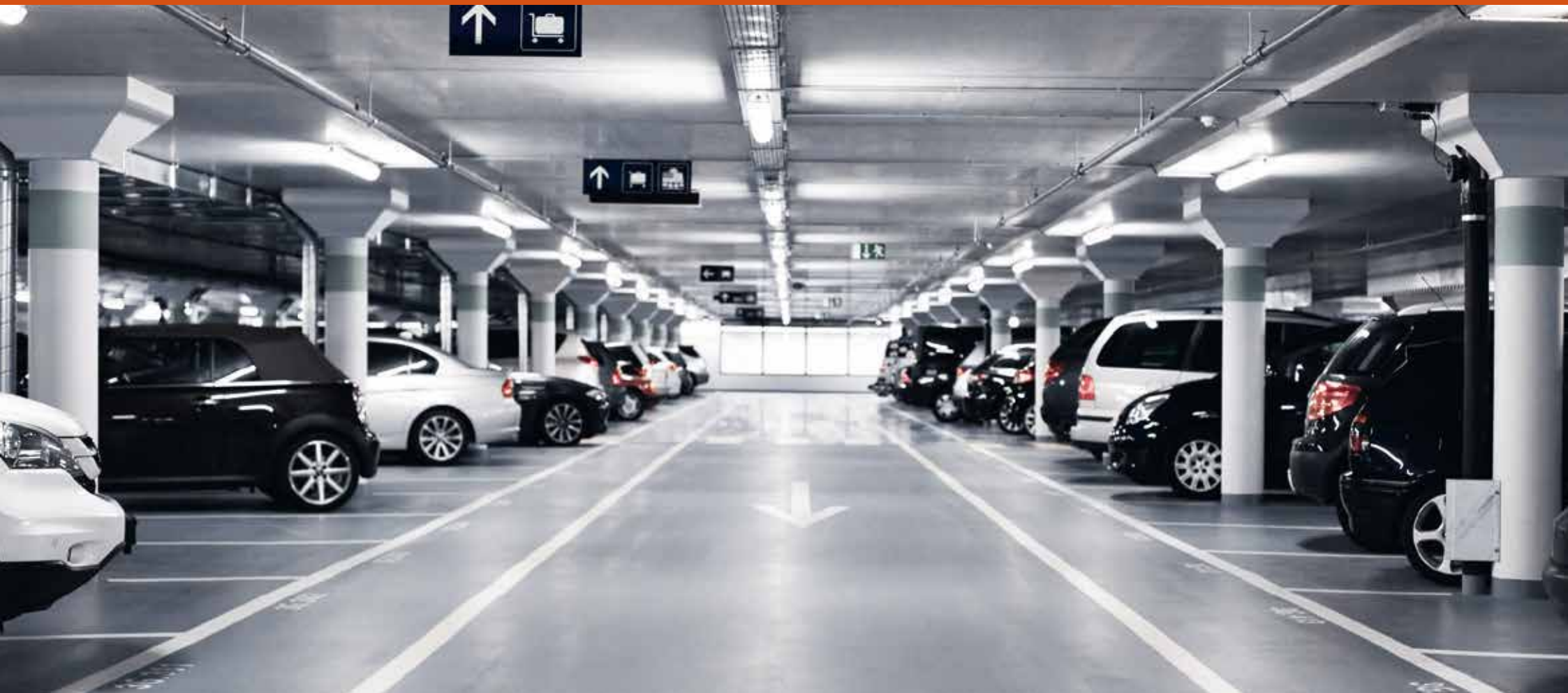
Product Overview 2022

Video Security

SMART Product Line

GRUNDIG

Authorized Distributor



What can you expect from the new SMART product line from GRUNDIG Security?

Leaving our tried and tested reliability aside, you will also find a whole lot of image analysis functions, supported by artificial intelligence (AI). And there's a lot of functionality available. You can use facial recognition, for instance, to recognise people, or the LPR function to identify vehicle licence plates. Or you can quite simply reduce the frequency of false alarms signalling a spurious break-in or perimeter breach, by classifying objects as 'vehicle', 'person' or 'other'.

The SMART cameras from GRUNDIG Security can recognise faces in crowds of people, count heads and determine the length of queues at your supermarket till, therefore helping you to make the best possible use of your resources. They'll let you know when unauthorised people cross pre-defined lines or enter certain areas, and they'll trigger an alarm when objects are left at your doorstep.

These are just a few examples out of a plethora of possibilities which the exceptionally flexible SMART line products from GRUNDIG Security are able to offer.

So, if you want more than just pretty pictures and long recording times, please get in touch.

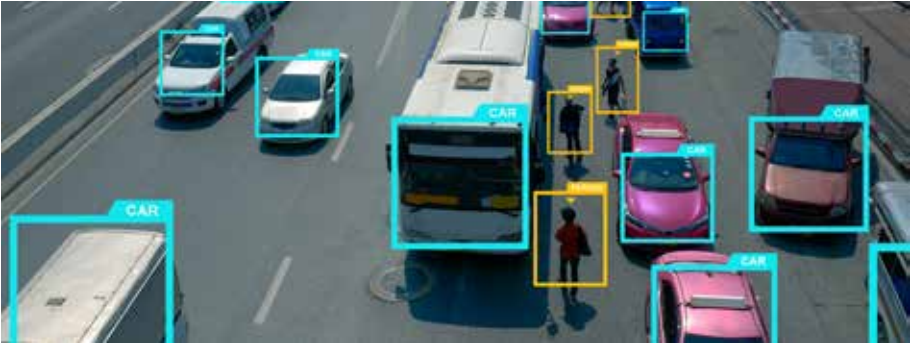
We look forward to hearing from you!



Content

- Image analysis functions 3
- IP Cameras
 - Eyeball/Dome..... 6
 - Bullet 7
- Recorders 8
- Mobile App 9
- Accessories 10
- Article numbers - structure and composition 11
- Guarantee 11
- Sustainability 11

Classify persons & vehicles



The GRUNDIG Security Smart Line cameras allow for clear classification of people and vehicles. This enables users, e.g. control centre operators, to define alarm events and responses even more precisely. The bidirectional audio function also allows direct communication with people on site.

Identify licence plates



The licence plate recognition function enables reliable and automated access control, for example on a company’s premises. The legitimisation of the respective vehicle is regulated via black and white lists.

Identify faces



As soon as a face is recognised, alarm information, including attributes such as gender and age, is reported. The data is compared with the database: If the face is not stored in the database, it is recognised as "unknown". Wearing a face mask can also be defined as a recognition attribute.

Enter area



The “enter area” detection function allows the precise definition of areas. As soon as someone enters the defined area, an alarm message is triggered. The moving object is classified as a person, motorised or non-motorised vehicle. Four different customisable rules are available for the alarm response.

Detect left/removed objects



The "left/removed objects” detection function offers two usage options: objects located in a predefined area can be quickly identified. The function can also be used to detect the removal of any objects in this area.

Manage queues



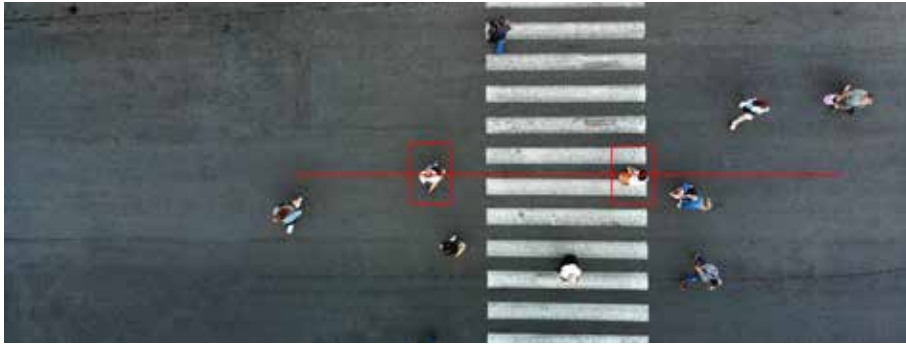
An alarm will be triggered as soon as a queue reaches a certain length. Alternatively, this function can be used to trigger an event by exceeding a certain dwell time.

Use Heat Map



The heat map function facilitates the identification of areas where people prefer to stay or which are less frequented.

Cross lines



If "Line crossing" is activated, crossing a previously defined line triggers an alarm message. The corresponding object is classified as a person, motorised or non-motorised vehicle. Four different customisable rules are available for the alarm response.

Analyse crowds



An alarm is triggered as soon as the set number of people in a predefined area is exceeded. An acoustic message can also be emitted.

Count people/objects



The "people/object counting" analysis function reliably counts people, moving objects as well as motorised or non-motorised vehicles, also in two different directions. By means of powerful reports, the collected data can be evaluated for further use.

Detect unusual noises



This audio analysis function detects unusual noises such as barking dogs, baby crying and gunshots, thereby triggering an alarm. The sensitivity of this function can be adjusted infinitely.

**GU-CI-AC5617E****GU-CI-AC5637E****GU-CI-AC8616E****GU-CI-AC5617V****GU-CI-AC5637V****GU-CI-AC8616V**

Smart

Smart

Smart

Smart

Smart

Smart

| | | | | | | |
|-----------------------------|---|---------------------------------|---|---------------------------|------------------------------------|---------------------------|
| Video Resolution | 2880 x 1620 | 2880 x 1620 | 3840 x 2160 | 2880 x 1620 | 2880 x 1620 | 3840 x 2160 |
| Sensitivity (Colour) | 0.004 Lux @ F1.6 (AGC ON) | 0.004 Lux @ F1.6 (AGC ON) | 0.009 Lux @ F1.6 (AGC ON) | 0.004 Lux @ F1.6 (AGC ON) | 0.004 Lux @ F1.6 (AGC ON) | 0.009 Lux @ F1.6 (AGC ON) |
| Lens Focal Length | 2.8mm | 2.8~12 mm, motorised, autofocus | 2.8mm | 2.8mm | 2.8~12 mm, motorised, autofocus | 2.8mm |
| Colour/B&W | IR-cut filter removable (ICR) | | | | | |
| Wide Dynamic Range | 120 dB | | 72 dB (Digital Wide Dynamic Range) | | 72 dB (Digital Wide Dynamic Range) | |
| Image Enhancement | BLC, 3D DNR, HLC | | | | | |
| Max. IR range | up to 30 m | up to 45 m | up to 30 m | up to 20 m | up to 30 m | up to 20 m |
| Video Compression | H.265, H.265+, H.264, H.264+, MJPEG | | | | | |
| SD Memory | Micro-SD, SDHC, SDXC, from 32 up to 256 GB | | | | | |
| Audio Input/Output | Built-in microphone | 1 audio input, 1 audio output | Built-in microphone | Built-in microphone | 1 audio input, 1 audio output | Built-in microphone |
| Audio Detection | Detects unusual sounds: barking dogs, baby crying, gunshots, sudden increase and decrease in noise | | | | | |
| Licence Plate Recognition | in conjunction with SD card or Smart Recorder | | in conjunction with SD card or Smart Recorder | | | |
| Intelligent Video Analytics | Detection functions for: movement, intrusion, person/vehicle, line crossing, remove objects, count objects, faces, heat map, queues, crowds | | | | | |
| Operating Temperature | -35 °C ~ 60 °C (-31 °F ~ 140 °F) | | | | | |
| Supply Voltage | 12 VDC, PoE (IEEE 802.3af) | | | | | |
| Power Consumption | max. 5.5 W | max. 9.5 W | max. 5.5 W | max. 5.5 W | max. 7 W | max. 5.5 W |





GU-CI-AC5617T

Smart



GU-CI-AC5637T

Smart



GU-CI-AC8616T

Smart

| | | | |
|-----------------------------|---|---------------------------------|------------------------------------|
| Video Resolution | 2880 x 1620 | 2880 x 1620 | 3840 x 2160 |
| Sensitivity (Colour) | 0.004 Lux @ F 1.6 (AGC ON) | 0.004 Lux @ F 1.6 (AGC ON) | 0.009 Lux @ F 1.6 (AGC ON) |
| Lens Focal Length | 3.6mm | 2.8~12 mm, motorised, autofocus | 3.6mm |
| Colour/B&W | IR-cut filter removable (ICR) | | |
| Wide Dynamic Range | 120 dB | | 72 dB (Digital Wide Dynamic Range) |
| Image Enhancement | BLC, 3D DNR, HLC | | |
| Max. IR range | up to 30 m | up to 45 m | up to 30 m |
| Video Compression | H.265, H.265+, H.264, H.264+, MJPEG | | |
| SD Memory | Micro-SD, SDHC, SDXC, from 32 up to 256 GB | | |
| Audio Input/Output | Built-in microphone | 1 audio input, 1 audio output | Built-in microphone |
| Audio Detection | Detects unusual sounds: barking dogs, baby crying, gunshots, sudden increase and decrease in noise | | |
| Licence Plate Recognition | in conjunction with SD card or Smart Recorder | | |
| Intelligent Video Analytics | Detection functions for: movement, intrusion, person/vehicle, line crossing, remove objects, count objects, faces, heat map, queues, crowds | | |
| Operating Temperature | -35 °C ~ 60 °C (-31 °F ~ 140 °F) | | |
| Supply Voltage | 12 VDC, PoE (IEEE 802.3af) | | |
| Power Consumption | max. 5.5 W | max. 9.5 W | max. 5.5 W |



The SMART line from GRUNDIG Security: NDAA compliant

NDAA is the abbreviation for the National Defense Authorization Act. The John S. McCain National Defense Authorization Act (NDAA) for Fiscal Year 2019 was signed into law on August 13, 2018 and effective from August 2020. The law, specifically Section 889, prohibits federal agencies, their contractors and grant or loan recipients from procuring or using “telecommunications and video surveillance equipment or services” from specific Chinese companies as a “substantial or essential component of any system, or as critical technology as part of any system.” The SMART product line from GRUNDIG Security complies with the requirements of this law.





GU-RN-AC8104P

Smart



GU-RN-AC8108P

Smart



GU-RN-AC8116P

Smart



GU-RN-AP8216N

Professional

| | | | | |
|------------------------------|--|---|--|--|
| IP Inputs | 4 channels | 8 channels | 16 channels | 16 channels |
| Recording Bandwidth | up to 50 Mbps | up to 128 Mbps | up to 112 Mbps | up to 256 Mbps |
| Outgoing Bandwidth | up to 64 Mbps | up to 128 Mbps | up to 96 Mbps | up to 128 MBit/s |
| Recording Resolution | 8 Megapixel, 5 Megapixel, 3 Megapixel, 1080p, 960p, 720p | | | |
| Video Compression | H.265, H.265+, H.264, H.264+, MJPEG | | | |
| Recording Mode | Continuous, Event, Motion, Video Loss, Schedule | | | |
| Search Mode | Date/Time, Event, Motion, Search Backup | | | |
| Intelligent Search Functions | Search for people, motorised vehicles, non-motorised vehicles, entering area, line crossing, thumbnails, markers, faces and attributes, presence, visitor frequency, vehicle licence plate | | | |
| External Backup | USB HDD, USB Memory, Network | | | |
| HDMI Output | 4K (3840 × 2160), 2K (2560 × 1440), 1920 × 1080, 1600 × 1200, 1900 × 1200, 1440 × 900, 1280 × 1024, 1280 × 720, 1024 × 768 | | | HDMI1: 3840 × 2160 (EDID/4K), 2560 × 1440, 1920 × 1080, 1440 × 900, 1280 × 1024, 1280 × 720, 1024 × 768 HDMI2: 1920 × 1080, 1440 × 900, 1280 × 1024, 1280 × 720, 1024 × 768 |
| Hard Disk Bay | 1 x SATA III, 1 x eSATA | | 2 x SATA III | 2 x SATA III, 1 x eSATA |
| Max. Storage Capacity | up to 10 TB capacity for each HDD | | | |
| Audio Input/Output | 1 audio input, 1 audio output | | | |
| Alarm Input/Output | 4/1 | 8/1 | 8/1 | 16/1 |
| Power over Ethernet | 4 independent 10/100 Mbps PoE Ethernet interfaces | 8 independent 10/100 Mbps PoE Ethernet interfaces | 16 independent 10/100 Mbps PoE Ethernet interfaces | |
| Supply Voltage | 48 VDC, power supply included | | | 12 VDC ± 10 %, power supply included |
| Power Consumption | ≤ 5 W without hard disk | ≤ 6 W without hard disk | ≤ 8 W without hard disk | ≤ 18 W without hard disk |

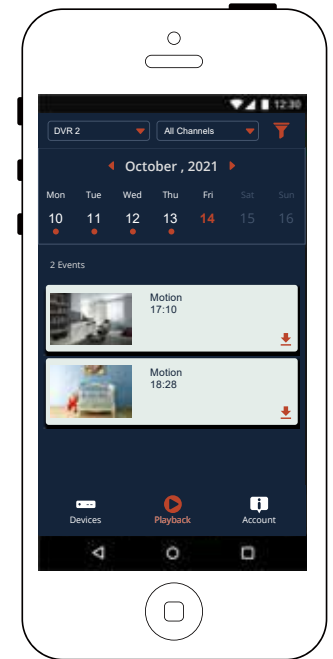
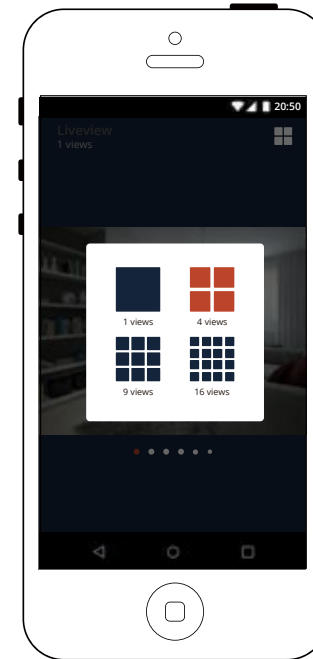
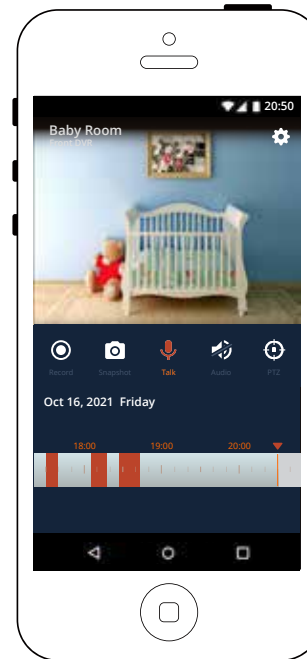
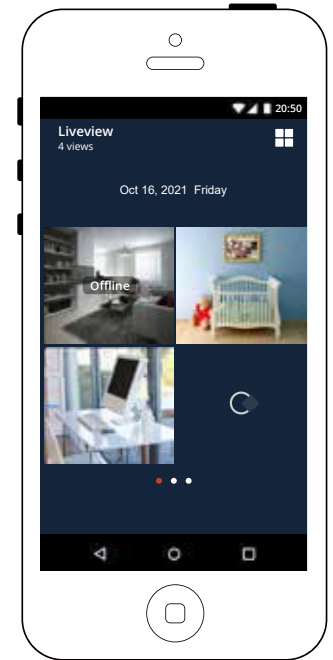
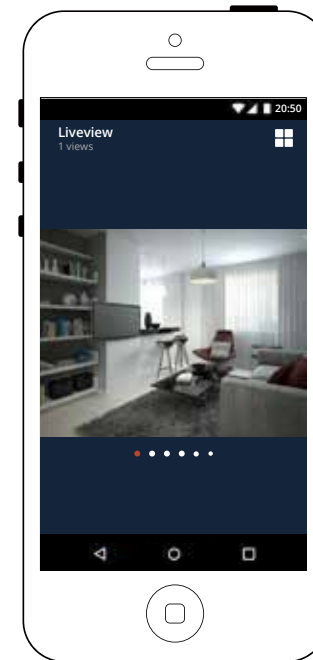
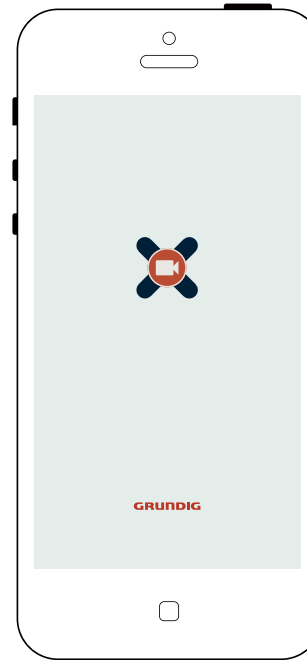
THE XCMS APP BY GRUNDIG SECURITY: INSTALLED AND CONFIGURED IN NO TIME

The XCMS app is a surveillance application for mobile phones and tablets that support cloud P2P function.

The Mobile Software App has been designed to help small businesses effectively operate and manage security devices from a smartphone or tablet.

The power to view live images, play back footage, and receive notifications remotely keeps owners and operators in touch with their business, even when away.

- Real-time video preview of up to 16 channels
- Swipe for PTZ control and camera movement, pinch to zoom in/out in preview mode
- Display the cause of alarm triggering
- Push alarm notification
- Snapshot function
- Manage up to 255 device sets: Add/delete/modify device profiles





GU-CI-AC5617E
GU-CI-AC8616E



GU-BR-AJX01
Junction Box Pendant Mount



GU-BR-AJX02
Junction Box



GU-BR-AMW04
Wall Mount Bracket



GU-CI-AC5637T



GU-BR-AJX01
Junction Box Pendant Mount



GU-BR-AJX02
Junction Box



GU-BR-AJX05
Junction Box Hinged



GU-CI-AC5637E



GU-BR-AMW05
Wall Mount Bracket



GU-BR-AJX01



GU-BR-AMP01
Pendant Mount Bracket



GU-BR-AMW01
Wall Mount Bracket



GU-CI-AC5617V
GU-CI-AC8616V



GU-BR-AJX09
Junction Box Pendant Mount



GU-BR-AJX10
Junction Box



GU-BR-AMF02
Flush Mount Adapter



GU-BR-AMW04
Wall Mount Bracket



GU-BR-AJX06



GU-BR-AMP01
Pendant Mount Bracket



GU-BR-AMW01
Wall Mount Bracket



GU-BR-AJX07



GU-BR-AMP01
Pendant Mount Bracket



GU-BR-AMW01
Wall Mount Bracket



GU-CI-AC5637V



GU-BR-AJX06
Junction Box



GU-BR-AJX07
Junction Box Pendant Mount



GU-BR-AJX08
Dual Junction Box incl. PoE Switch



GU-BR-AMF01
Flush Mount Adapter



GU-BR-AMW05
Wall Mount Bracket



GU-BR-AJX08



GD-BR-AMW08
Wall Mount Bracket for PTZ Domes



GU-BR-AJX08A
Adapter Junction Box



GU-BR-AJX09



GU-BR-AMP01
Pendant Mount Bracket



GU-BR-AMW01
Wall Mount Bracket



GU-CI-AC5617T
GU-CI-AC8616T



GU-BR-AJX01
Junction Box Pendant Mount



GU-BR-AJX02
Junction Box



GU-BR-AJX05
Junction Box Hinged



GU-BR-AMW01



GU-BR-AMC01
Corner Mount Bracket



GU-BR-AML01
Pole Mount Bracket



GU-BR-AMW02



GU-BR-AML01
Pole Mount Bracket

www.grundig-security.com.tr

İntegral Kurumsal Teknoloji Çözümleri San. ve Tic. Ltd. Şti.
info@grundig-security.com.tr

Errors excepted. GRUNDIG Security reserves the right to change specifications without notice | © ABETECHS GMBH 2022

GRUNDIG
Authorized Distrubutor